

Instruction

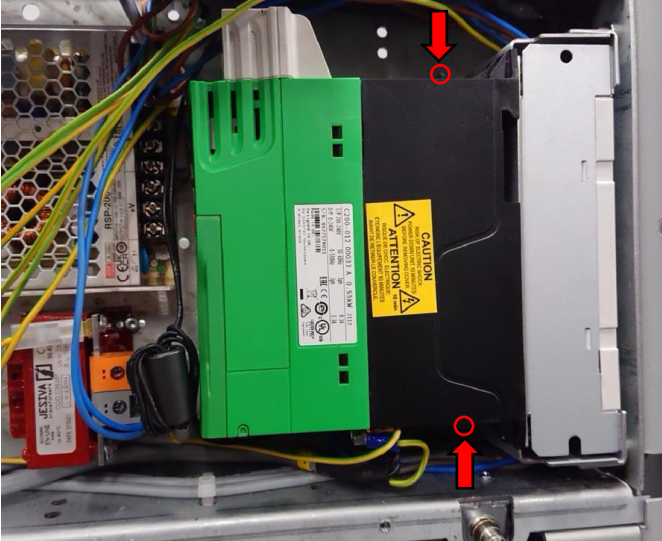
How to replace the Nidec inverter with the Omron inverter

Note: The Nidec Inverter is not available as spare part.

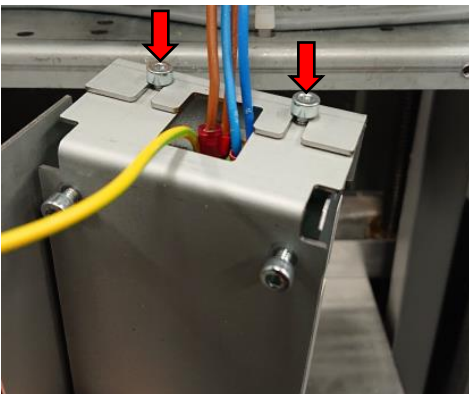
SK550 1.1

Before placing the Omron Inverter into a machine with a Nidec inverter, you first need to remove one bracket.

- Loosen the two bolts of the filter bracket and place the inverter assembly face forward in the machine.



- Disconnect the cables on the Nidec inverter
- Remove the inverter from the adaptor bracket.
- Loosen the four bolts on the adaptor bracket.



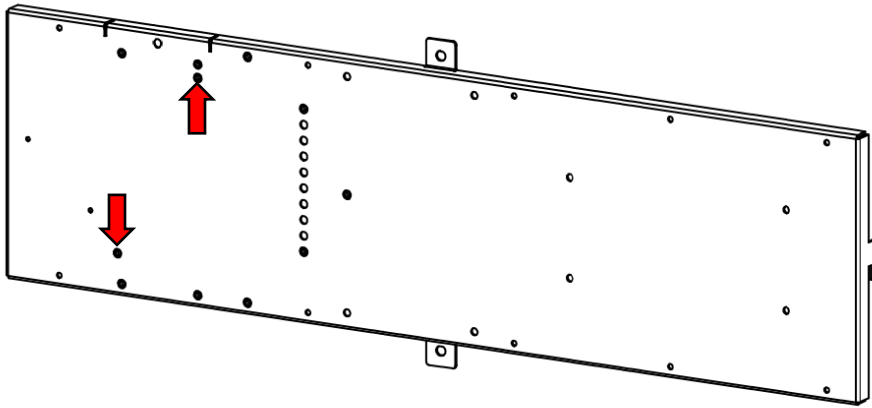
- Remove the adaptor bracket.



- Mount the Omron inverter directly on the filter.
- Use the wiring diagram to connect the inverter (page 5).

GA480

- Disconnect the cables on the Nidec inverter and remove the Nidec inverter.
- The hole pattern for the Omron inverter is available on the electronics plate. Mount the Omron inverter on the plate.
- Use the wiring diagram to connect the inverter (page 5).
- Check that the cables cannot come into contact with the cradle before starting the machine

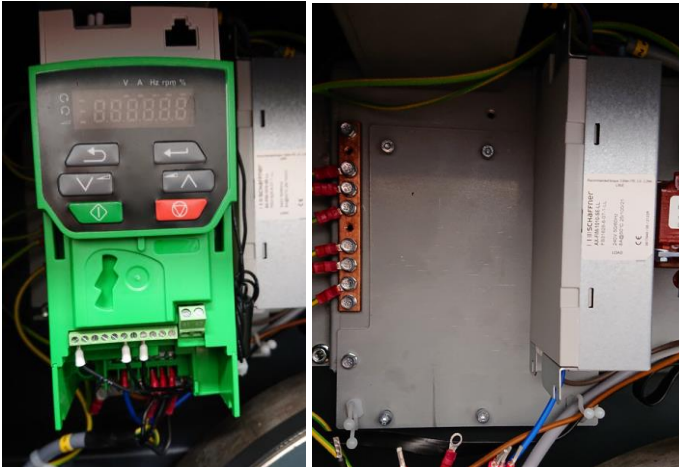


GA350

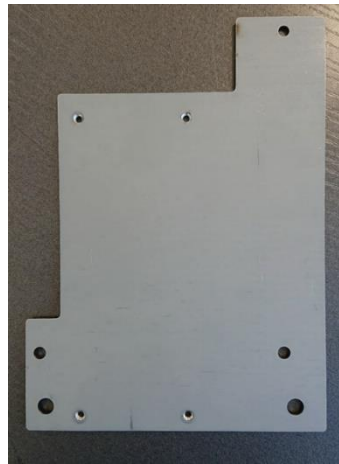
Before placing the Omron Inverter into a machine with a Nidec inverter, you first need to remove one plate.

- Disconnect the cables on the Nidec inverter and remove the Nidec inverter.

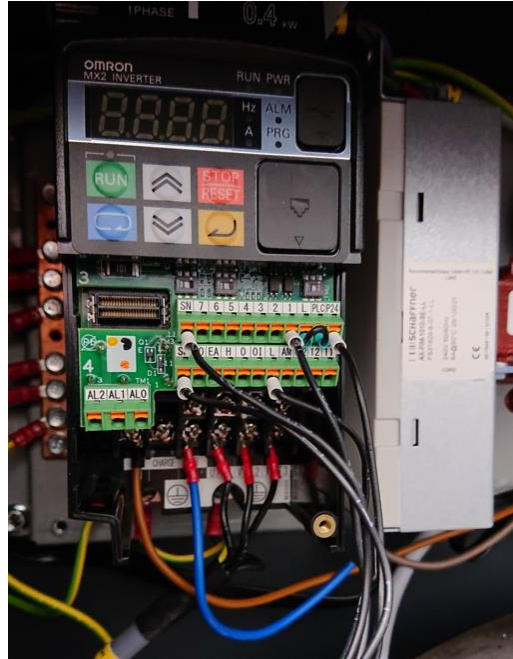
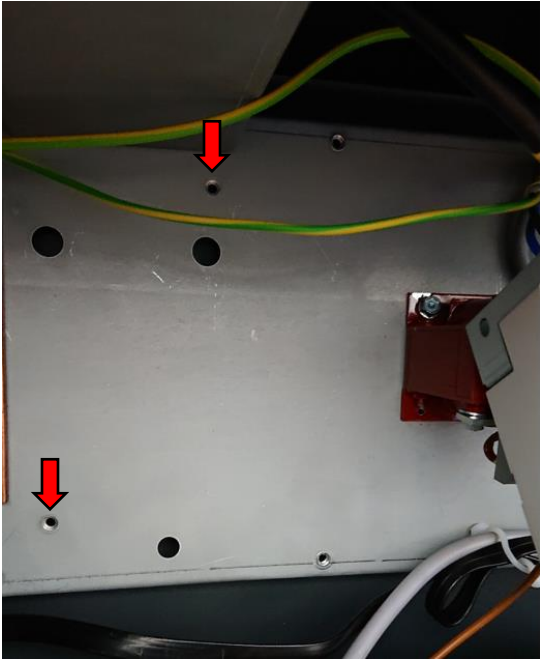




- Remove the filter (cables connected)
- Remove the adaptor plate



- The hole pattern for the Omron inverter is available on the electronics plate. Mount the Omron inverter and the filter on the plate.
- Use the wiring diagram to connect the inverter (page 5).

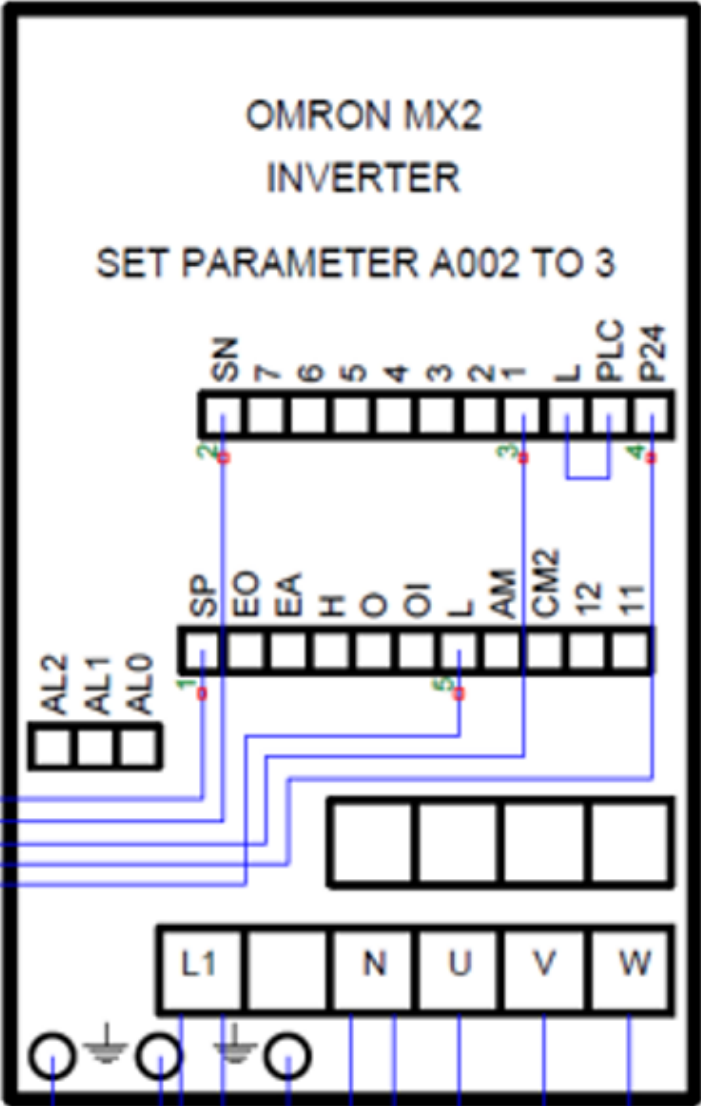


- Check that the cables cannot come into contact with the cradle before starting the machine



Wiring diagram inverter

Omron



Nidec

